

# Dawn to dusk

21 Jun — 1 Aug 2025 at the Forum Gallery in New York, United States

12 JUNE 2025



Gregory Gillespie, Landscape with dancing shiva, 1983-90. Courtesy of Forum Gallery

Air, light and atmosphere are the subjects of the luminous works by twenty-three artists in the exhibition *Dawn to dusk*, opening June 12th and continuing through August 1st, 2025 at Forum Gallery, New York. Whether depicting people or places, the works in the exhibition are imbued with the deep feeling each artist employs by painting the unseen elements that resonate in the surround.

Expansive landscapes by Robert Bauer, William Beckman and Tula Telfair offer the majesty of sky and sun above the low horizon of open meadows while Gregory Gillespie, Paul Fenniak and Rance Jones illuminate the figures in their scene paintings with the light and shadow of day and night. Gillespie's baseball game and Beckman's plowed farm field are miles apart in many ways but there is a kinship in their objectivity, while Bauer and Telfair put their impressions forward and leave it to us to provide imaginative memories to complete the pictures. In each landscape, the sense of temperature and humidity is palpable.

*Dawn to dusk* is also an opportunity to see exceptional, precise realism. On view will be an impressive new movie theatre painting by renowned photorealist, Davis Cone; twilight watercolors capturing the atmosphere of Coney Island by Frederick Brosen; magical works on paper by G. Daniel Massad and Anthony Mitri, and the latest poetic New England oil by Linden Frederick; these are shown with classic urban scenes by Robert Cottingham and Craig McPherson. All are artists of consummate technical skill, but here they are united by their remarkable ability to convey emotion and personal involvement with the subject through the care and concern they put into every detail of each work.

Morning light yields different truths to the figures in paintings by Alan Feltus, Michèle Fenniak and Alyssa Monks but the sense of time is clear to each of them.

The works in *Dawn to dusk* are explorations of time and space, light and shadow, sunrise and twilight. The exhibition is on view Monday through Friday, 10 AM to 5:30 PM at Forum Gallery, 475 Park Avenue at 57th Street, New York from June 12th to August 1st, 2025.



## Forum Gallery

Forum Gallery regularly exhibits at art fairs throughout the United States. The gallery exhibited at the inaugural edition of The Art Show (ADAA – Park Avenue Armory) and has since participated twenty times.

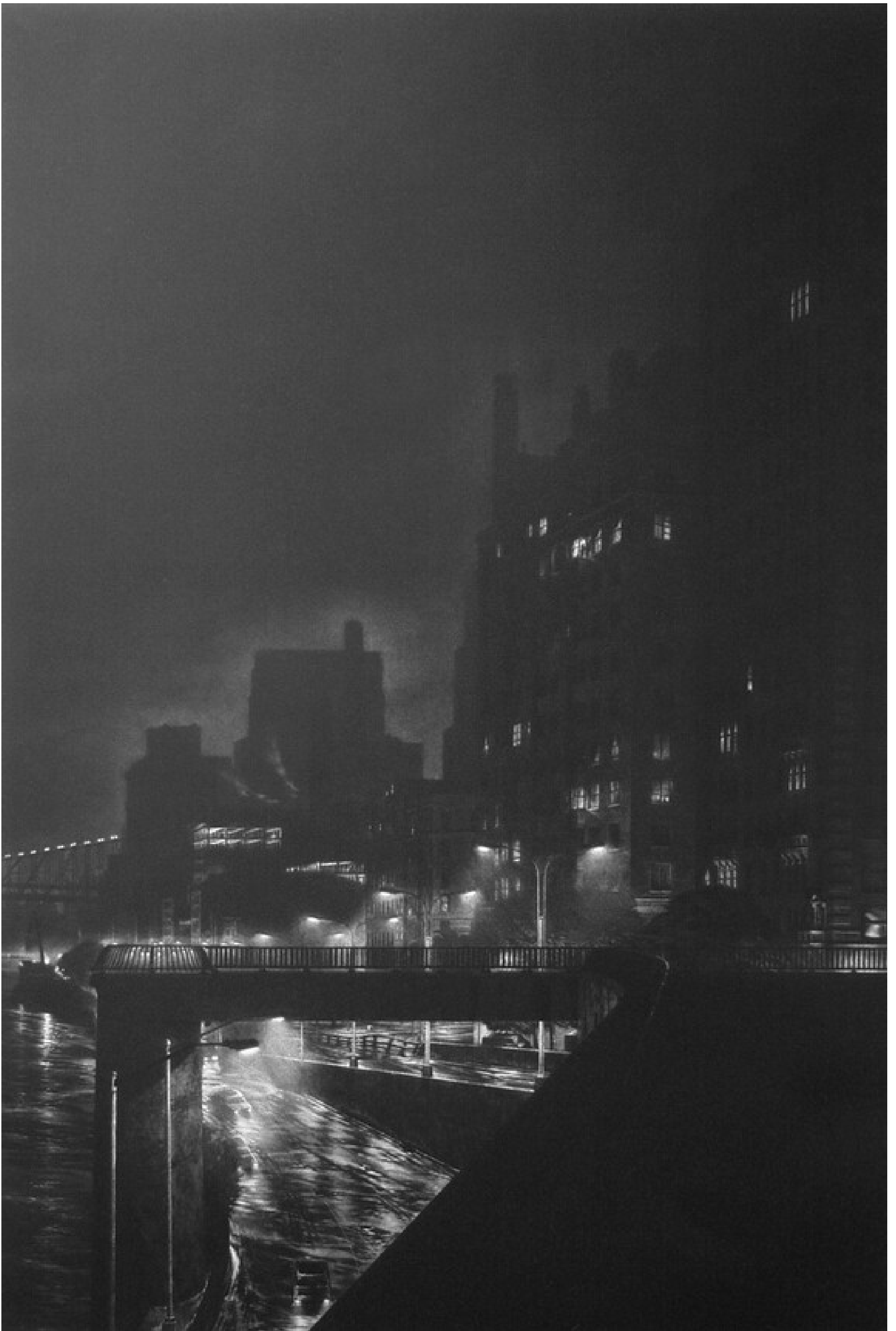
Gallery profile

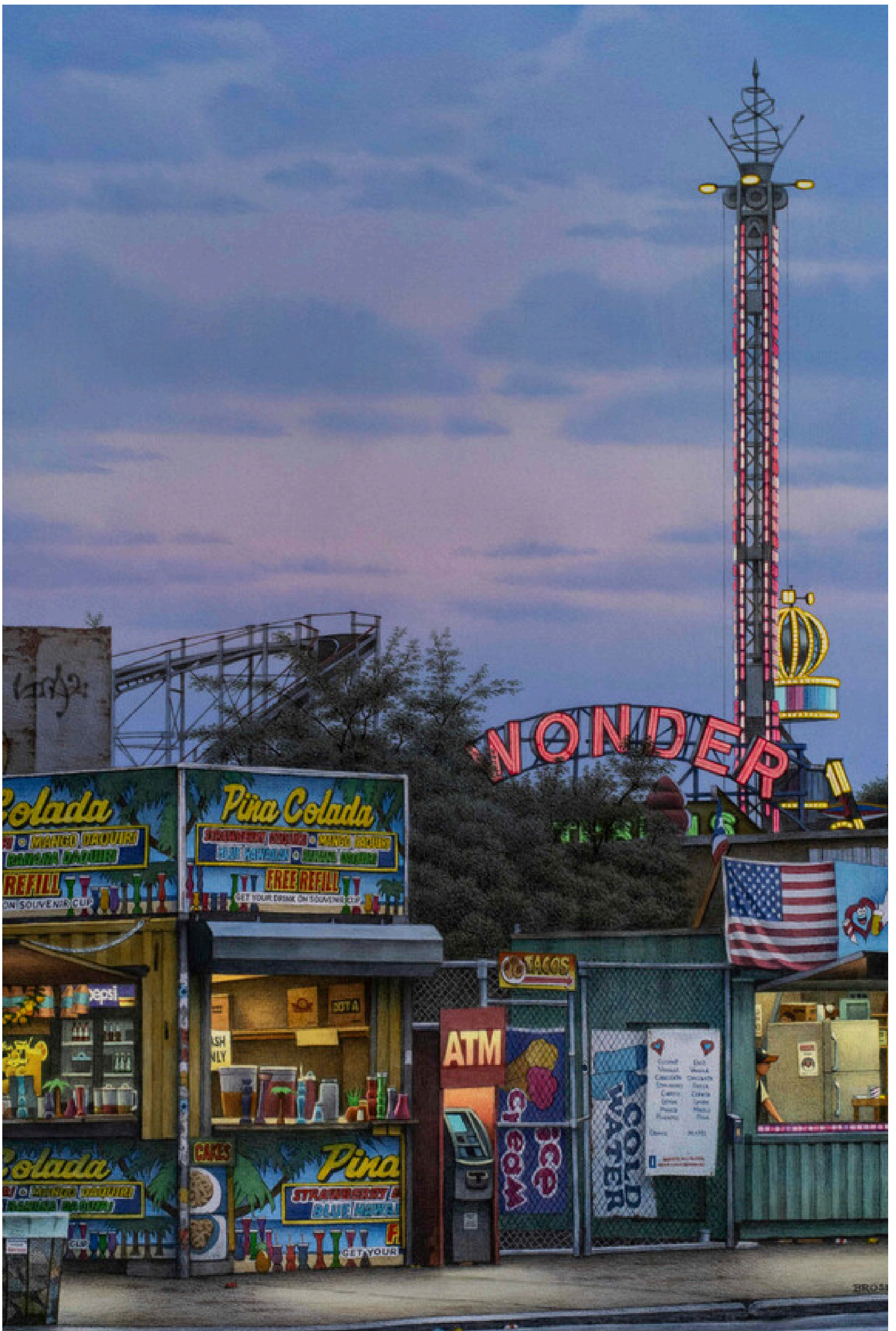
Location	Founded in
New York, United States	1961











1. Michèle Fenniak, Morning swim, 2005. Courtesy of Forum Gallery
2. Craig McPherson, FDR drive, 1993. Courtesy of Forum Gallery

MORE FROM FORUM GALLERY



New works for the new year  
6 Feb — 29 Mar 2025



Twentieth century stories  
14 Nov 2024 — 4 Jan 2025

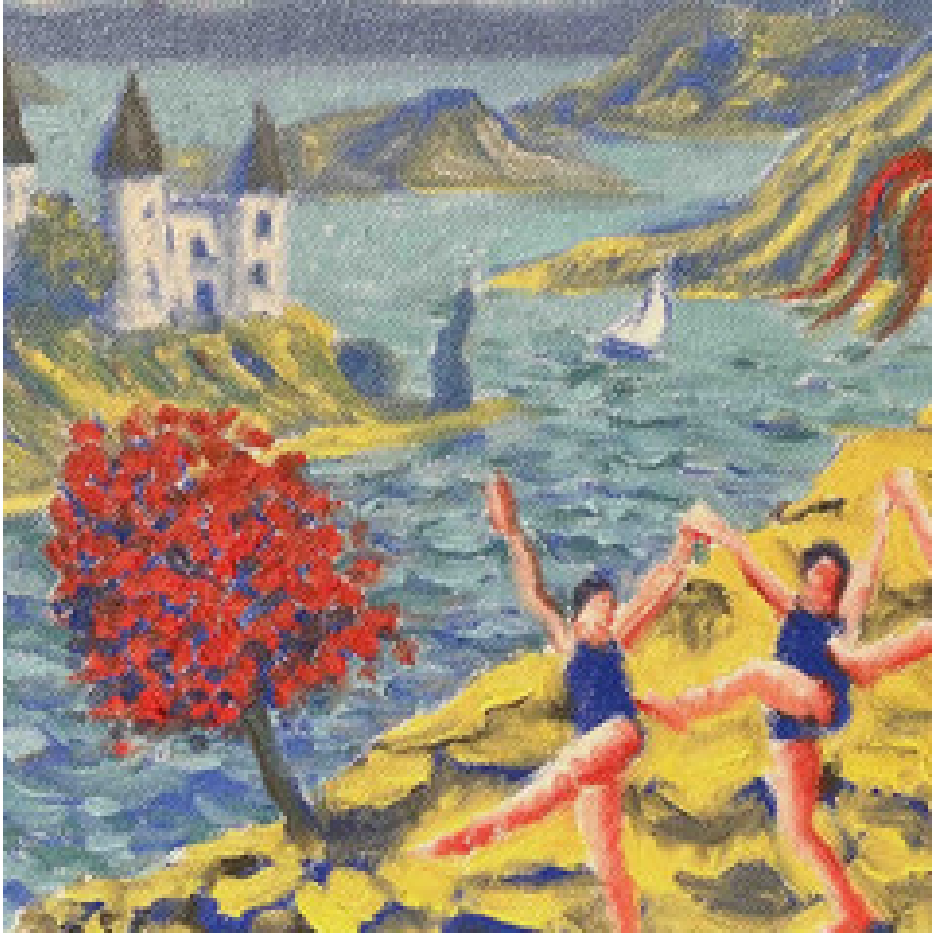


What's new?  
12 Sep — 9 Nov 2024



Out of town  
25 Jul — 7 Sep 2024

MORE IN NEW YORK, UNITED STATES



In bloom

17 Jun — 1 Aug 2025 at 532 Gallery Thomas Jaeckel



Summer group show

26 Jun — 19 Jul 2025 at Gallery Henoch



Stanley Bielen, a modest arrangement

26 Jun — 1 Aug 2025 at Kathryn Markel Fine Arts



Ecstatic Earth

26 Jun — 1 Aug 2025 at Kathryn Markel Fine Arts

[MORE IN UNITED STATES](#)



[RBG at 50. Photo and video](#)

[21 Jun — 23 Aug 2025 at Rena Bransten Gallery in San Francisco](#)



[36 views](#)

[21 Jun — 23 Aug 2025 at Rena Bransten Gallery in San Francisco](#)



[Structuring elements](#)

[26 Jun — 9 Aug 2025 at Heather Gaudio Fine Art in Greenwich](#)



[Soft structures](#)

[27 Jun — 28 Aug 2025 at Jane Lombard Gallery in New York](#)

Subscribe

Get updates on the Meer

Email address

Subscribe

